



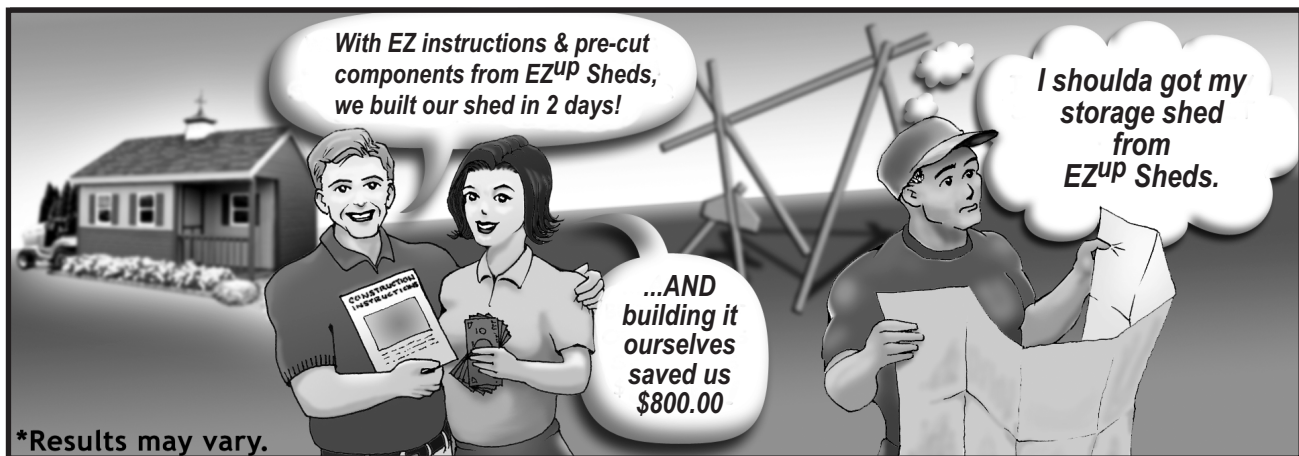
SAMPLE Assembly Details

We have been manufacturing do-it-yourself building kits for over 30 years, helping homeowners to *build a better barn* and save money.

We provide detailed 3 dimensional drawings and written directions that guide you step-by-step through the assembly process.

No Experience Necessary...our pre-cut wall framing will have you building like a professional carpenter. The trim is pre-mitered and the doors are pre-built creating a professional look when your barn raising is completed.

If you have a questions, help is just a phone call away, available 7 days.



I can't tell you enough how easy the kit was to build, how precise of a kit it was and how simple the directions were. My neighbors LOVE IT -- my wife adores it and my 3-year-old can't get enough of it. I must say it's a beautiful kit. I did 95% of the work myself and for a 1-man operation -- it was a snap!

Anthony from Fuquay Varina, NC

What a GREAT shed & company. I have never done construction work or built anything like this before but with the EZ to follow step by step instructions it was very easy and fun. And when I got stuck or had a question someone was always their to answer my question on the first ring, then answered it completely and even walked me through a step. Well worth the price and the material is very very good quality. If you are undecided about this shed once you get the shed and build it you will be amazed by the beauty and the space that it gives you. If I ever move again I will be buying another shed from EZ up Sheds without a question in my mind.

Chad from Pompton Lakes, NJ


Manufactured by Reynolds Building Systems, Inc.

205 Arlington Drive

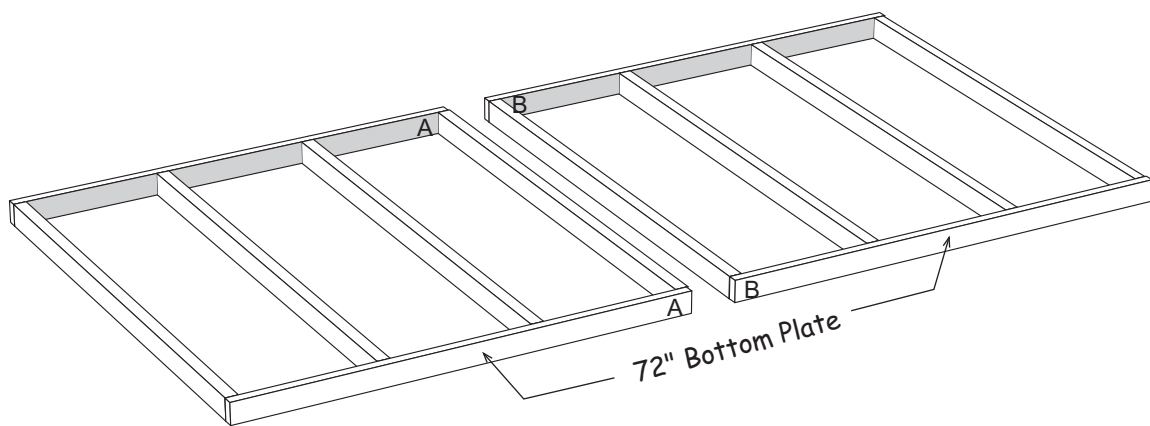
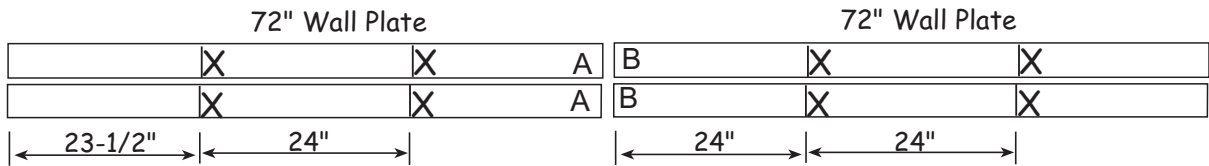
Greenville, PA 16125

724-646-3775

Sample Wall Assembly

 Note; Text instructions are not included on sample drawings.

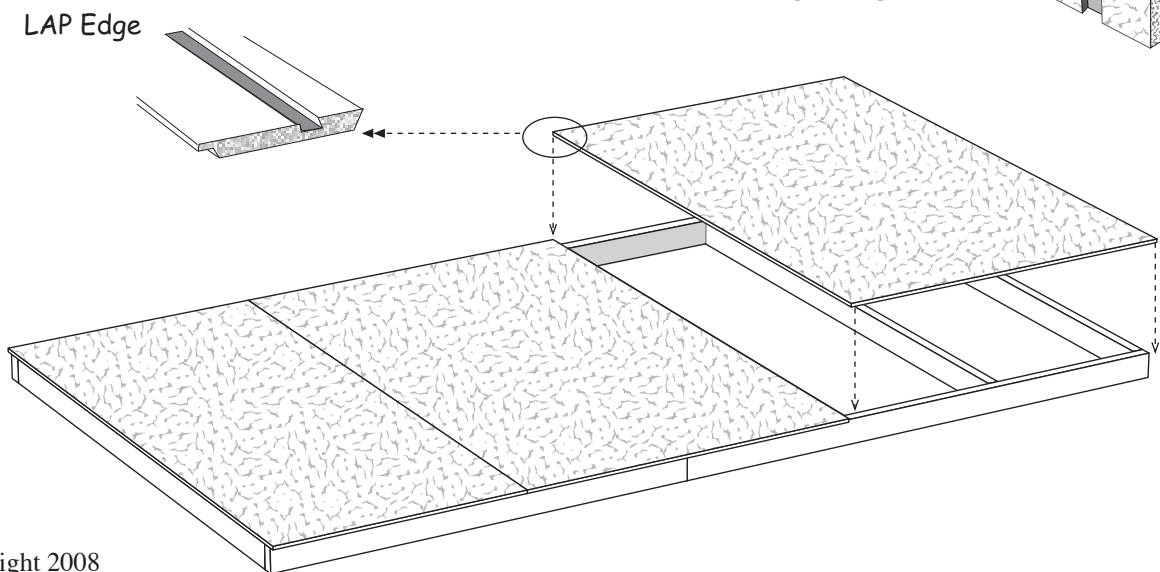
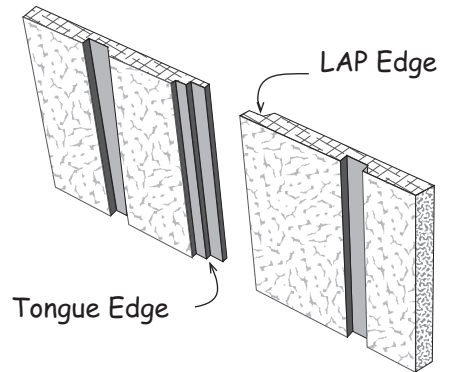
Pre-cut 2x4 wall framing make assembly of the walls fast. Instructions show the proper method to mark wall studs for proper alignment to siding.



Pre-cut primed siding saves time and material waste.

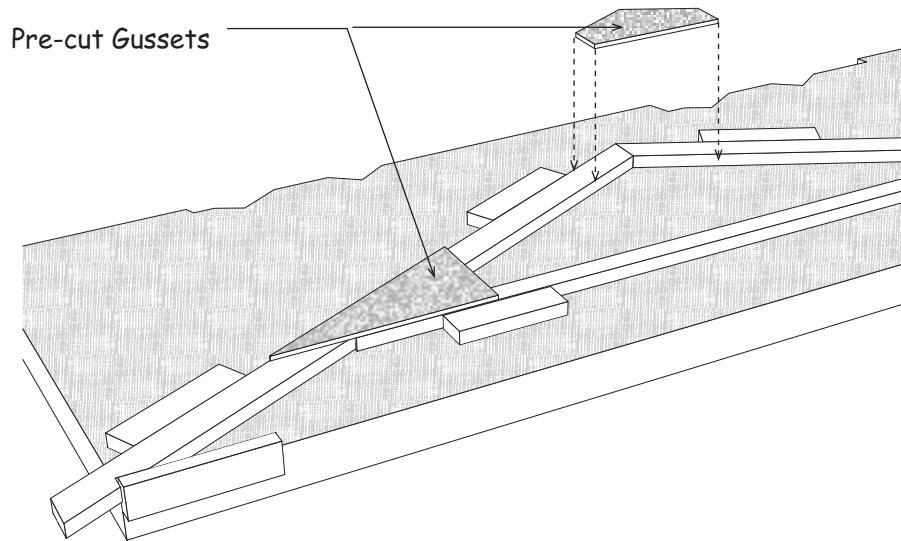
To identify which edge we want you to use, we will refer to the edge as either the 'LAP' Edge or the Tongue Edge.

Use 7d galv. nails. Space nails 9" apart.

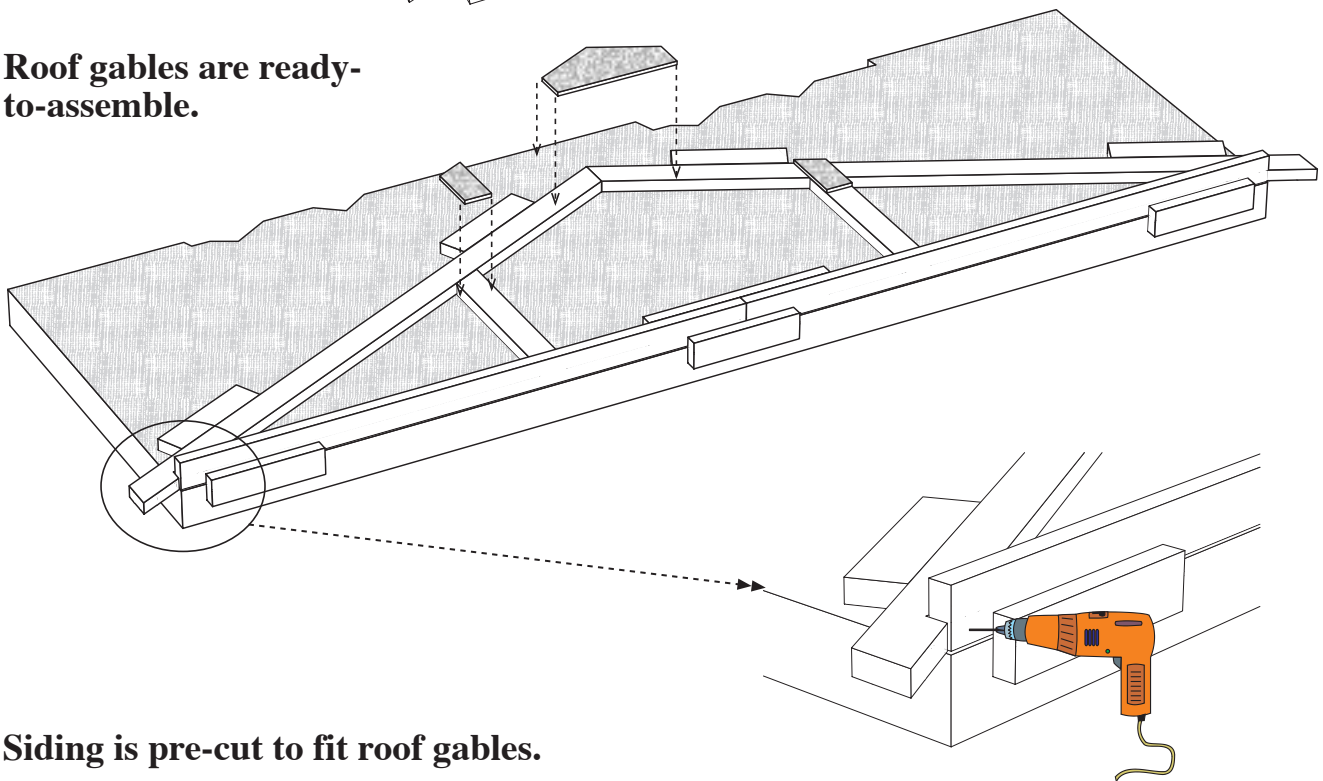


Sample Truss & Gable Assembly

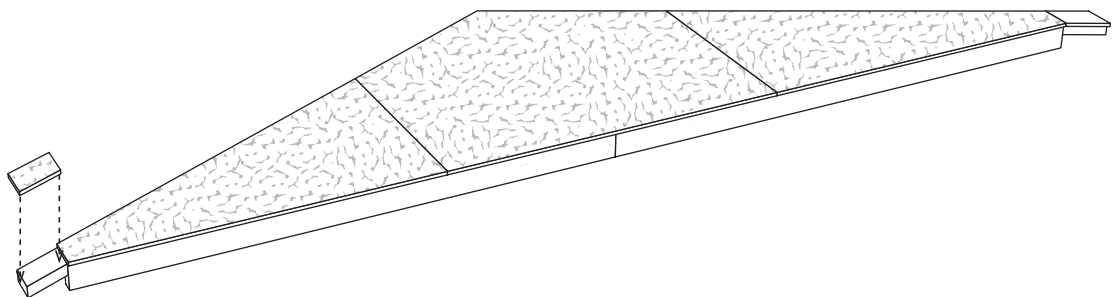
Pre-cut 2x4 truss components insure that the trusses will be assembled accurately. Detail shows using floor as a work area.



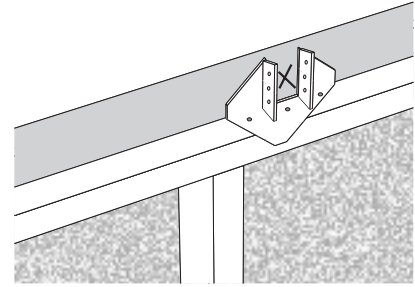
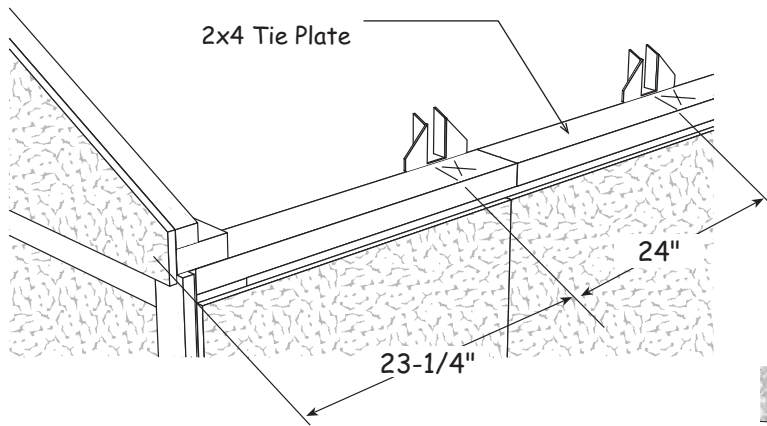
Roof gables are ready-to-assemble.



Siding is pre-cut to fit roof gables.



Sample Roofing Assembly

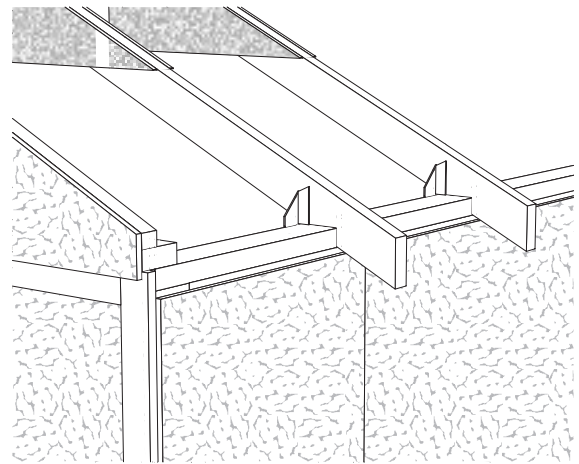


Inside of Building

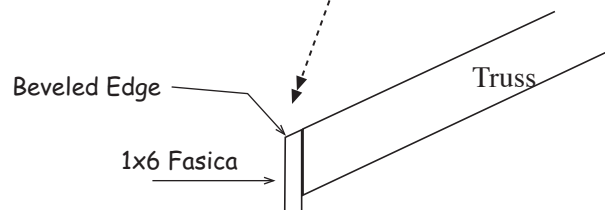
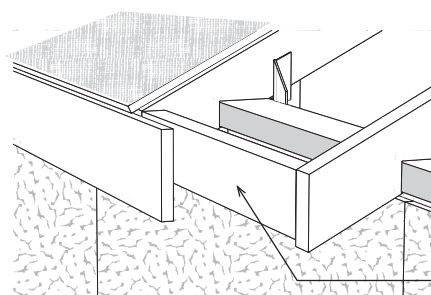
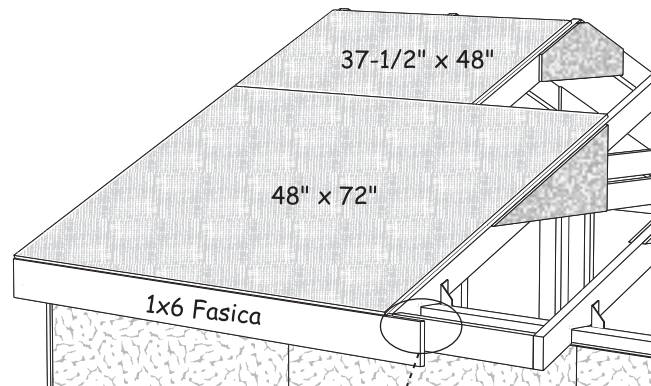
Simpson hurricane hangers are supplied to anchor trusses to the walls.

Trusses are engineered for 40 psf roof load and 90 mph wind load.

Florida trusses are available that meet 140 mph wind load.

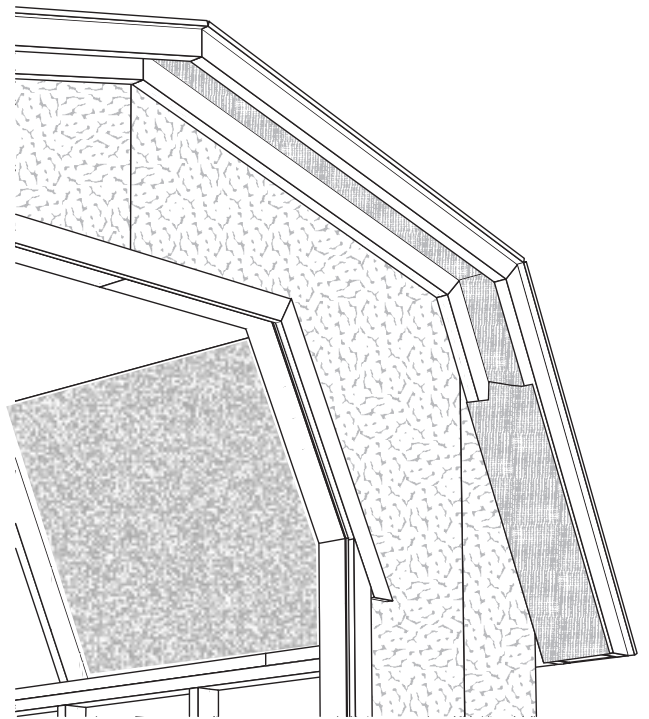
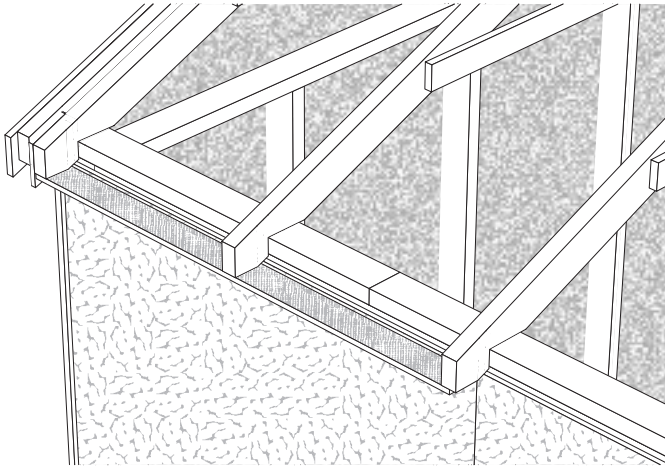


Instruction show roof sheathing and fascia installation.



Sample Overhang Assembly

Soffit material is pre-cut.



Sample Door Details

Entry doors are pre-built with white pine trim and either LP primed siding or 3/4" solid pine barn siding. Check model specifications for siding type.

