



12' x 20' -50951 (Anthracite w/ Off White Trim)



## 12' Imperial Metal Building

DuraMax Imperial Metal Buildings offer strength and durability, low maintenance and lot's of storage space. The base has approximately 1,396 cubic feet of space. A 99" wide roll up door is wide enough for SUV or sports car for secure parking storage.

They are reinforced with metal inserted columns for even greater rigidity and strength. This Imperial Metal Building can handle up to 20 lbs per square foot of snow. Their attractive design and color go well in any landscape.

- 99" Wide Front Roll Up Door Fits All Common SUV's
- Side Lockable Door for Added Convenience and Security
- Metal Reinforced Roof Support Truss System holds up to 20 lb./sqft of snow
- Hot Dipped Galvanized Steel Frame Parts
- Metal Frame Thickness of 0.042" and a Wall Thickness of 0.012"
- Ridge Reinforced Walls
- Extendable (*Optional*)
- Backed by a 10 Year Limited Warranty
- Available in 3 colors: Anthracite w/ Off White trim, Off White w/ Brown Trim & Green w/ Off White trim

## IMPERIAL METAL BUILDING



12' x 26'



12' x 26'



12' x 26'



Inside Front View

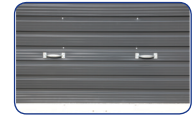


Front View



Inside Back View

Heavy Reinforced Galvanized Steel Roof Trusses, Beams and Wall Support



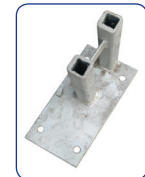
Front Roll Up Door Handle



Front / Back Dual Air Vent



1 Side Lockable Door Included



Ground Anchor is made of Heavy Duty Solid Steel Construction



Available also in Green with Off White Trim & Off White with Brown Trim



### 12' Imperial Metal Building Specifications

| Item # | Description     | Color Shed/Trim                      | Exterior Dimensions     |       |        | Interior Dimensions |       |        | Box wt./lbs. | Front Roll Up Door Dimensions |        | Side Door Dimensions |        |
|--------|-----------------|--------------------------------------|-------------------------|-------|--------|---------------------|-------|--------|--------------|-------------------------------|--------|----------------------|--------|
|        |                 |                                      | Width                   | Depth | Height | Width               | Depth | Height |              | Width                         | Height | Width                | Height |
| 50931  | 12' x 20'       | OFF WHITE/BROWN                      | 145"                    | 238"  | 102"   | 127"                | 222"  | 83"    | 779          | 99"                           | 77"    | 24.75"               | 78.5"  |
| 50951  | 12' x 20'       | Anthracite/OFF WHITE                 | 145"                    | 238"  | 102"   | 127"                | 222"  | 83"    | 779          | 99"                           | 77"    | 24.75"               | 78.5"  |
| 50961  | 12' x 20'       | GREEN/OFF WHITE                      | 145"                    | 238"  | 102"   | 127"                | 222"  | 83"    | 779          | 99"                           | 77"    | 24.75"               | 78.5"  |
| 55131  | 12' x 26'       | GREEN/OFF WHITE                      | shed + 1 extension kit  |       |        |                     |       |        |              |                               |        |                      |        |
| 55151  | 12' x 26'       | Anthracite/OFF WHITE                 | shed + 1 extension kit  |       |        |                     |       |        |              |                               |        |                      |        |
| 55161  | 12' x 26'       | OFF WHITE/BROWN                      | shed + 1 extension kit  |       |        |                     |       |        |              |                               |        |                      |        |
| 55231  | 12' x 32'       | GREEN/OFF WHITE                      | shed + 2 extension kits |       |        |                     |       |        |              |                               |        |                      |        |
| 55251  | 12' x 32'       | Anthracite/OFF WHITE                 | shed + 2 extension Kits |       |        |                     |       |        |              |                               |        |                      |        |
| 55261  | 12' x 32'       | OFF WHITE/BROWN                      | shed + 2 extension Kits |       |        |                     |       |        |              |                               |        |                      |        |
| 54931  | 1 Extension Kit | 145" Width x 71" Depth x 102" Height |                         |       |        |                     |       |        |              |                               |        |                      |        |
| 54951  |                 |                                      |                         |       |        |                     |       |        |              |                               |        |                      |        |
| 54961  |                 |                                      |                         |       |        |                     |       |        |              |                               |        |                      |        |

#### Packaging - Imperial Metal Garage

| SKU#  | Pack   | Contents   | Size (Inches) W x D x H | Weight (Pounds)             |
|-------|--------|--|-------------------------|-----------------------------|
| 50931 | 1 of 4 | Wall Panels, Shutter Door Panel, Gable Panel & Accessories | 102.5" x 28" x 4.6"     | 207 lbs.                    |
| 50951 | 2 of 4 | Roof Panels & Side Door                                    | 81" x 33" x 3"          | 130 lbs.                    |
| 50961 |        | Metal Profiles   | 110" x 14" x 6"         | (3) 223 lbs. / (4) 219 lbs. |

#### Packaging - Imperial Metal Garage Extension Kit

| SKU#  | Pack | Contents                           | Size (Inches) W x D x H | Weight (Pounds) |
|-------|------|------------------------------------|-------------------------|-----------------|
| 54931 | 1    | Wall & Roof Panels, Metal Profiles | 28" x 85" x 4"          | 223 lbs.        |
| 54951 |      |                                    |                         |                 |
| 54961 |      |                                    |                         |                 |

The Metal Garage is packaged in a heavy duty cardboard box, on a wooden frame. The packaging includes all components, hardware and an illustrated step-by-step instruction booklet. Shipped common carrier and requires lift gate for residential delivery.

### ASSEMBLY MADE EASY

All parts are pre-cut, drilled and numbered for ease of assembly. You need to provide a level concrete surface. In addition you will need a drill with a philips head, hammer, pliers and a ladder.



#### Checklist Prior to Imperial Metal Building Purchase

- Check with your local city hall for building ordinances & CCR's
- Be sure that intended placement of Imperial Metal Building is within your property lines
- Do not build shed over utility lines (gas, electrical, water, telephone, cable, etc)
- Measure the size of the intended Imperial Metal Building site and make sure you have a level ground or concrete foundation



www.DuramaxBP.com